

Synergic Pro² Range



Whether you want to

- Weld steel, stainless steel or aluminium,
- Process thick or thin materials,
- MIG Solder galvanised or aluminium sheets,

The precise working of the high-quality performance components in our units leads to convincing welding characteristics and, at the same time, high melting performance.

Part #	Product
1031705	REHM Synergic Pro ² 170-2
1031905	REHM Synergic Pro ² 190-2
1032302	REHM Synergic Pro ² 230-2 AM
1032304	REHM Synergic Pro ² 230-4 Quattro
1032802	REHM Synergic Pro ² 280-2
1032804	REHM Synergic Pro ² 280-4
1033105	REHM Synergic Pro ² 310-4
1122505	REHM Synergic Pro ² 250-4
1123005	REHM Synergic Pro ² 300-4
1123006	REHM Synergic Pro ² 300-4 S
1123600	REHM Synergic Pro ² 350-4
1123601	REHM Synergic Pro ² 350-4 S
1123610	REHM Synergic Pro ² 350-4 W
1123611	REHM Synergic Pro ² 350-4 WS
1124600	REHM Synergic Pro ² 450-4
1124601	REHM Synergic Pro ² 450-4 S
1124610	REHM Synergic Pro ² 450-4 W
1124611	REHM Synergic Pro ² 450-4 WS

Mig Torch, Return Cable & Flowmeter Not Included

All Units Carry the CE and S Mark & Meet the EN 60974-1 Standard

TECHNICAL DATA FOR SYNERGIC.PRO² 170-2 – 310-4

Type		170-2	190-2		230-2 AM	230-4 QUATTRO MIG	280-2	280-4	310-4
Setting range	[A]	30-170	30-140	50-190	15-230	15-230	35-280	35-280	35-300
Duty cycle I _{max} . 40 °C	[%]	30	50	30	40	40	40	40	40
Welding current*	[A]	80	100	105	150	150	180	180	210
Open circuit voltage	[V]	22-37	22-33	23-40	15-37	15-37	17-37	17-37	17-41
Switching levels		6	6		10	10	10	10	12
Wire feed		2 rollers	2 rollers		2 rollers	4 rollers	2 rollers	4 rollers	4 rollers
Power supply	[V]	1x230	1x230	2x400	3x400	3x400	3x400	3x400	3x400
Fuse (time lag)	[A]	20	20	16	16	16	16	16	16
Torch cooling type		Gas	Gas		Gas	Gas	Gas	Gas	Gas
Protection grade		IP 21	IP 21		IP 21	IP 21	IP 21	IP 21	IP 21
Weight	[kg]	54	60		68	68	72	72	78



Mega.Arc² Range



The quick and reliable route to greater quality and efficiency
 With the MEGA.ARC² you can operate beyond the usual limits of a MIG-MAG arc.

Your work becomes simpler and easier than ever before. Without having to sacrifice your priorities. Welding as you've never experienced it before.

The MEGA.ARC² series units are particularly robust and well thought through, and are therefore specially designed for tough industrial use welding thin or thick plates of steel, stainless steel or aluminium.

FOCUS.ARC –

Welding in a new dimension

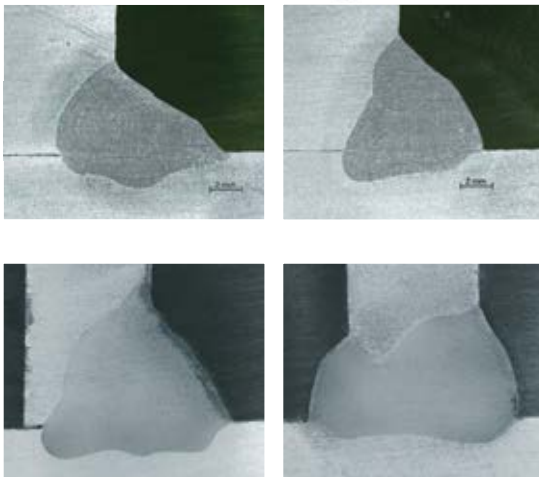
FOCUS.ARC one again substantially extends the area of applications for the welder:

- Reliable root formation
- Exceptionally deep penetration
- Reduced heat transfer
- Reliable edge formation
- Reduced undercutting
- Less weld preparation

Welding in confined spaces with a short, powerful arc

The highly focused arc alters penetration substantially, decreasing the seam opening angle and enabling the production of new seam geometries.

FOCUS.ARC is ideal for applications that depend on deep penetration and reliable root formation.



Without FOCUS.ARC

With FOCUS.ARC

Mig Torch, Return Cable & Flowmeter Not Included

All Units Carry the CE and S Mark & Meet the EN 60974-1 Standard

Part #	Product
1330260	REHM Mega.Arc ² 250-4
1330310	REHM Mega.Arc ² 300-4
1330361	REHM Mega.Arc ² 350-4 S
1330360	REHM Mega.Arc ² 350-4 WS
1330460	REHM Mega.Arc ² 450-4 WS

TECHNICAL DATA MEGA.ARC²

Type		MEGA.ARC ² 250-4	MEGA.ARC ² 300-4	MEGA.ARC ² 350-4 S	MEGA.ARC ² 350-4 WS	MEGA.ARC ² 450-4 WS
Setting range	[A]	25 – 250	25 – 300	25 – 350	25 – 350	25 – 450
Duty cycle at 40 °C and I _{max} ambient temperature	[%]	50	50	50	50	50
Welding current at 100% duty cycle (40 °C)	[A]	180	220	250	250	320
Open circuit voltage	[V]	68	68	68	68	68
Power supply	[V]	3 x 400	3 x 400	3 x 400	3 x 400	3 x 400
Continuous power at 100% duty	[kVA]	5,8	7,6	9,2	9,2	13,4
Fuse (slow)	[A]	16	32	32	32	32
Power factor [cos phi]		0,98	0,98	0,98	0,98	0,98
Insulation class		H	H	H	H	H
Cooling type		AF	AF	AF	AF	AF
Torch cooling		gas	gas	gas	water	water
Protection Rating		IP 23	IP 23	IP 23	IP 23	IP 23
Weight (with case)	[kg]	120	124	170	173	176
Dimensions LxWxH (with case)	[mm]	1030 x 605 x 845		1030 x 605 x 845 (1030 x 605 x 1410)		
				1330361	1330360	1330460

Barracuda RTC Range

Part #	Product
1422835	REHM Barracuda RTC 60 Plasma Cutter
1424535	REHM Barracuda RTC 100 Plasma Cutter
1424535	REHM Barracuda RTC 150 Plasma Cutter

DUAL INPUT VOLTAGE
380/525 Volt

UNINTERRUPTED CUTTING OF PERFORATED SHEETS
Thanks to material orientated high speed pilot and cutting current control



Comes complete with 6M Air Cooled Hand Torch, Return Cable & Air Mist Separator

All Units Carry the CE and S Mark & Meet the EN 60974-1 Standard

TECHNICAL DATA BARRACUDA RTC

Type		RTC 60	RTC 100	RTC 150
Setting range, continuous	[A]	10-60	15-100	25-150
Duty cycle at I max (10 min)	[%]	60	60	60
Cutting capacity max.	[kw]	5,7	11,5	21
Current / voltage at 100 % duty cycle	[A/V]	50/90	80/105	130/130
Power supply voltage	[V]	3x 400 / 50 Hz		
Power consumption max.		7,5	13,5	24,5
Fuses (delayed action)	[A]	16	20	35
Power factor	[cos phi]	0,97	0,97	0,97
Degree of protection		IP 23	IP 23	IP 23
Dimensions (LxWxH)	[mm]	345x460x885	655x375x885	
Weight	[kg]	54	95	129
Max. quality cut with REHM power torch		15 mm	30 mm	40 mm
Max. separating cut, manual cut with ST 37/ 52		22 mm	40 mm	50 mm

Maximum efficiency and first-class cutting quality are the particular features of REHM plasma arc cutting units. The Barracudas are equipped with the fully proven and patented REHM transistor heavy-duty circuit breaker. Ample dimensioned power components and 100%-checked quality are a guarantee for the dependability of the Barracudas in tough applications for industry and professionals.

- Universal applicably for steel, stainless steel, aluminium non-ferrous metals and other electrically conducting metals, even with painted surfaces.
- Optimum cutting quality thanks to
 - precisely regulated and stepless adjustable cutting current
 - high performance reserves even at the critical end of the cut
 - exact control with voltage compensation
- Maximum economic efficiency from high cutting speed with simultaneously long service life and optimum cutting quality
- Reliable ignition using REHM Zetronik is possible both for contact and distant cutting with hose assembly up to 20m
- Long service life thanks to shutdown of the controlled pilot current during cutting, soft start function, and micro-controlled cutting current with patented transistor module

TIGER Digital Range



THE LIGHTEST
TIG-DEVICE IN
THE REHM - CLASS
from **7,1 kg**
TIGER
Setting the pace in WIG

The ULTRA version includes two additional options; the 17.5 kHz HYPER.PULS technology and the DUAL WAVE technology. The ULTRA version also has over 99 memory locations for recurring welding programs and an extended scope for individually setting different welding parameters.

Part #	Product
1503526	REHM Tiger 180 AC/DC Ultra
1503566	REHM Tiger 230 AC/DC Ultra

TIGER® digital		180 AC/DC ULTRA	230 AC/DC ULTRA
Setting range TIG	[A]	4-180	4-230
Duty cycle (ED) at I _{max} . (10 min.) at 40 °C TIG	[%]	40	35
Mains connection	[V]	1 x 230	1 x 230
Mains frequency	[Hz]	50/60	50/60
Fuse (slow-blow)	[A]	16	16
Torch cooling		Gas/water*	Gas/water*
Protection type		IP 23 S	IP 23 S
Power factor	[cos phi]	0.98	0.99
Power consumption at I _{max} .	[kVA]	6.1	5.8
Insulation class		F	F
Control socket	[pin]	19	19
Welding cable socket	[mm]	13	13
Weight	[kg]	7.3 / 15.8**	7.9 / 16.4**
Dimensions (LxWxH)	[mm]	480 x 160 x 320	480 x 160 x 320

**SINGLE DIGITAL
MULTI-FUNCTION
SELECTOR FOR
NAVIGATION TO
ALL APPLICATIONS**

Comes complete with 4M Gas Cooled Tig Torch, Return Cable & Flowmeter in a Carry Case

Foot Control Optional

All Units Carry the CE and S Mark & Meet the EN 60974-1 Standard

The mobile solution for all welding tasks that trades encounter every working day. Regardless of whether the task involves the processing of stainless steel, aluminium, steel, copper or titanium in different material thicknesses. **The TIGER® can do it all!**

The TIGER® with its 8 process variants masters any application with the correct arc.

ENCAPSULATED TUNNEL COOLING SYSTEM avoids dirt contamination

Dropping without failure...



and from a height of up to 90 cm. The TIGER® housing is designed so that the impacts that occur from being dropped from this height do not cause damage to the electronics.

Invertig.Pro Digital Compact

Part #	Product
1422835	REHM Invertig.Pro 280 AC/DC Digital Water-cooled Compact
1424535	REHM Invertig.Pro 450 AC/DC Digital Water-cooled Compact

- Comes complete with 4M Gas Cooled Tig Torch, Return Cable & Flowmeter
- Foot Control Optional
- All Units Carry the CE and S Mark & Meet the EN 60974-1 Standard



TECHNISCHE DATEN INVERTIG.PRO COMPACT

Type			280 AC/DC digital	450 AC/DC digital
Welding current at 100 % (ED)	TIG Electrode	[A]	280 280	450 360
Duty cycle (DC) at I max (10 min/40 °C)	TIG Electrode	[%]	100 60	100 100
Supply voltage		[V]	3 x 400 V 50 Hz	3 x 400 V 50 Hz
Fuse		[A]	16	32
Torch cooling			water	water
Weight	DC AC/DC	[kg]	76 78	81 82
Dimensions L x W x H		[mm]	855 x 600 x 900	855 x 600 x 900
Article number	DC AC/DC		1422830 1422835	1424535

INVERTIG.PRO COMPACT

Flexibility with integrated water cooling
The water-cooled INVERTIG.PRO COMPACT series is the right solution for a wide range of tasks. The compact combination units offer the user complete flexibility, whilst at the same time meeting the highest standards of performance and consistent quality levels.

The INVERTIG.PRO COMPACT combines the finest welding technology with being easy to use. A unique synergy of the best Bi-Power inverters with precise, digital welding process control, giving welding properties never before achieved until now.

maximum ease of use – even with gloves

The large, clear control panel is self-explanatory. The area that most matters to the user, the welding parameters, can be accessed quickly and safely using the centrally positioned push and turn knob, the R-pilot. Via the QUICK CHOICE shortcut keys P1 and P2, two current settings for a welding job can be saved and retrieved quickly and easily.

The easy way to zero-defects

Perform a wide range of tasks with one unit
Spot and interval welding The spot and interval programs allow welding times from 0.01 seconds upwards.

You benefit from:

The welding current can be significantly increased by dosing accurately when tacking. This results in less component distortion, less discolouration and a consistent quality in all tack welds. Thereby reducing rework and costs.

Dual Wave:

aluminum welding made easy and reliable
Dual Wave reduces the excess AC component in the arc to the level required for optimal welding results minimum. The controllability of the weld pool is significantly improved due to reduced heat input. The longer outgassing time reduces pores in the melt.

You benefit from:

Safer production with higher quality.

AC waveforms and automatic AC waveforms

The right AC waveform for your welding job – choose from sine, triangle or rectangle.

You benefit from:

For every application, the perfectly modulated AC arc. For AC digital devices in the INVERTIG.PRO range, the waveform that matches the welding job is set automatically by the welder using the REHM aC-matic.

Technology that thinks!