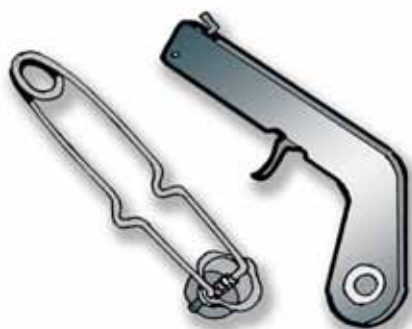




**THREADED FITTINGS AND REDUCERS (BSP)**  
**RACCORDI E RIDUZIONI FILETTATE (GAS)**

Threaded (BSP) <i>Filettatura (GAS)</i>	Code / <i>Codice</i> m x m	Code / <i>Codice</i> m x f	Code / <i>Codice</i> f x m	Code / <i>Codice</i> f x f
1/8"Rh x 1/8" Rh	0446-021482			0446-021782
1/8"Rh x 1/4"Rh	0446-021492	0446-021592	0446-021722	0446-021792
1/4"Rh x 1/4"Rh	0446-021502	0446-021602		0446-021802
1/4"Rh x 3/8"Rh	0446-021512	0446-016172	0446-016181	0446-021812
1/4"Rh x 3/8"Lh	0446-001205			
3/8"Rh x 3/8"Rh	0446-005912	0446-021611		0446-021822
3/8"Rh x 3/8"Lh	0446-005917	0446-016192	0446-016202	
3/8"Rh x 1/2"Rh	0446-021522	0446-021622	0446-021732	0446-021832
1/2"Rh x 1/2"Rh	0446-021532	0446-021632		0446-021842
1/2"Rh x 1/2"Lh	0446-021535			
1/2"Rh x 3/4"Rh	0446-021542	0446-021642	0446-021742	0446-021852
3/4"Rh x 3/4"Rh	0446-032311	0446-021652		0446-021862
3/4"Rh x 1"Rh	0446-021552	0446-021662	0446-021752	0446-021872
1"Rh x 1"Rh	0446-032321	0446-021672		0446-021882
1"Rh x 1"1/4 Rh	0446-021562	0446-021682	0446-021762	0446-021892
1"1/4 Rh x 1"1/4 Rh	0446-032331	0446-021692		0446-021902
1"1/4 Rh x 1"1/2 Rh	0446-032341	0446-021702	0446-021772	0446-021912
1"1/2 Rh x 1"1/2 Rh	0446-021572	0446-021712		0446-021922



**FLINTSTONE LIGHTERS**  
**ACCENDITORI A PIETRA FOCAIA**

Series / <i>Serie</i>	Code / <i>Codice</i>	
	Lighters <i>Accenditori</i>	Spare flints <i>Pietrine ricambio</i>
Pistol / <i>Pistol</i>	0635-109269	0635-109289
Cup / <i>Tazza</i>	0635-109319	0635-109339

ACCESSORIES  
 ACCESSORI

6

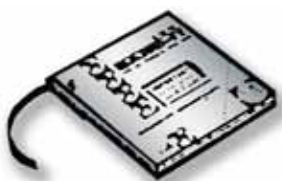


Preformed smooth I.D. clamps. Vibration resistant and automatically locked with one simple lever movement. Junior clamps are ideal where superior strength is required.

*Fascette preformate per serraggi di tubi, ove è richiesta una tenuta elevata e con minimo ingombro.*

## HOSE CLIPS / FASCETTE STRINGITUBO

Series / Serie	Inside ø clip ø Int. fascetta	Strip width Largh. nastro mm	Strip thickness Spessore nastro mm	Code (unit) Codice (a pezzo)
J240	19.1	6.4	0.51	0452-010513
J243	25.4	9.5	0.64	0452-010543
J202	34.9	6.4	0.51	0452-010553
J241	34.9	6.4	0.51	0452-010523
J205	38.1	15.9	0.76	0452-010623
J245	47.6	9.5	0.64	0452-010533
J207	50.8	15.9	0.76	0452-010633



Band and buckles can be used for fastening virtually any size. Typical application is where superior strength is required.

*Il sistema è composto da nastri e graffe, con il quale è possibile realizzare serraggi di qualsiasi forma e diametro.*

## STRIP / NASTRO

Series / Serie	Width / Larghezza mm	Thickness / Spessore mm	Code / Codice*
C203	9.5	0.64	0452-010643
C204	12.7	0.76	0452-010563
C205	15.9	0.76	0452-010573
C206	19.1	0.76	0452-010583

\*30,5 m band rolls / Rotolo da 30,5 m

## CRAMPS / GRAFFE

Series / Serie	Width / Larghezza mm	Code (unit) Codice (a pezzo)
C253	9.5	0452-010653
C254	12.7	0452-010593
C255	15.9	0452-010603
C256	19.1	0452-010613

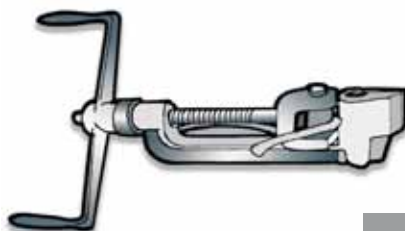


## FEATURES

For fastening the hoses to the hose tails. When fitted, the clip grips the hose radially in an uniform manner, ensuring a perfect seal.

## CARATTERISTICHE

*Per fissare i tubi flessibili sui portagomma. La fascetta montata comprime il tubo radialmente in modo uniforme garantendo una perfetta tenuta.*



Applies tension to the strip and has a cutter leaving the fitted clip with a burr-free edge.

*Esercita la tensione sul nastro ed è munito di una taglierina che lascia la fascetta montata priva di bava.*

## HOSE CLIP TENSIONER WITH ADAPTOR MORSETTO TENDIFASCETTE CON ADATTATORE

Code / Codice

0452-294019



### BRASS HOSE TAILS WITH CAP SEAT / PORTAGOMMA IN OTTONE CON SEDE A CALOTTA

Nut (BSP thread) Dado (filetto GAS)	Code / Codice							
	ø 6	ø 8	ø 10	ø 13	ø 16	ø 20	ø 25	ø 32
1/4"	0416-001712	0416-016271						
3/8"	0416-001212	0416-003032	0416-001702					
1/2"		0416-015437	0416-015438	0416-015439				
3/4"		0416-030132	0416-030182	0416-030302	0416-030342			
1"						0416-030462		
1" 1/4							0416-030582	
1" 1/2								0416-030661



### BRASS NUT FOR HOSE TAILS DADO RACCORDO IN OTTONE PER PORTAGOMMA

Nut thread (BSP) Filetto dado (GAS)	Hose tails to be used Portagomma da impiegarsi				Code / Codice
	ø 6	ø 8	ø 10	ø 13	
1/4" Rh Dx	ø 6	ø 8	-	-	0418-001732
1/4" Lh Sx	ø 6	ø 8	-	-	0418-001735
3/8" Rh Dx	ø 6	ø 8	ø 10	-	0418-001722
3/8" Lh Sx	ø 6	ø 8	ø 10	-	0418-001725
1/2" Rh Dx	ø 8	ø 10	ø 13	-	0418-015442
1/2" Lh Sx	ø 8	ø 10	ø 13	-	0418-015445
3/4" Rh Dx	ø 8	ø 10	ø 13	ø 16	0418-030142
3/4" Lh Sx	ø 8	ø 10	ø 13	ø 16	0418-030145
1" Rh Dx	ø 16	ø 20	ø 25	-	0418-030471
1"1/4 Lh Sx	ø 25	ø 32	-	-	0418-030591
1"1/2 Rh Dx	ø 25	ø 32	-	-	0418-030671



### DOUBLE BRASS HOSE TAILS / PORTAGOMMA DOPPIO IN OTTONE

ø x ø	Code / Codice	ø x ø	Code / Codice
5 x 5	0416-000851	6 x 8	0416-020901
6 x 6	0416-000862	6 x 10	0416-020911
8 x 8	0416-000872	6 x 13	0416-020921
10 x 10	0416-000882	8 x 10	0416-020931
13 x 13	0416-017322	8 x 13	0416-020941
		10 x 13	0416-020951